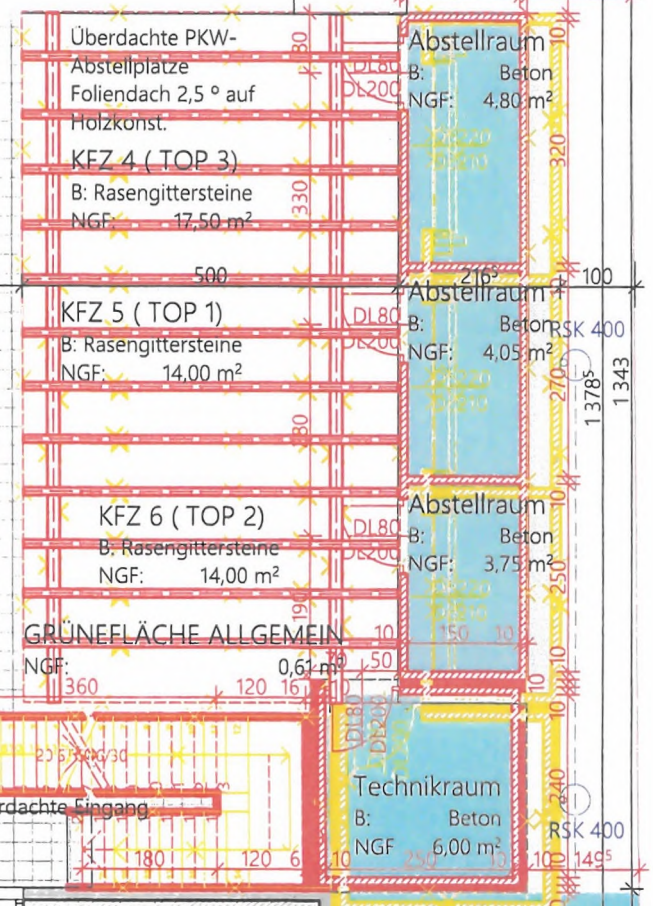
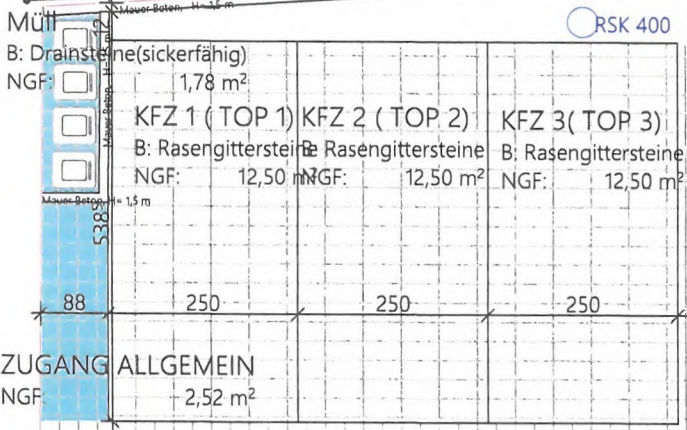


Landesbahn

EK km 7,422

GRUNDSTÜCKSGRENZE, MAUER H=15 m

GRÜNEFLÄCHE ALLGEMEIN  
NGF: 40,71 m<sup>2</sup> LWP



ZUFAHRT  
B: Drainsteine (sickerfähig)  
NGF: 112,15 m<sup>2</sup>

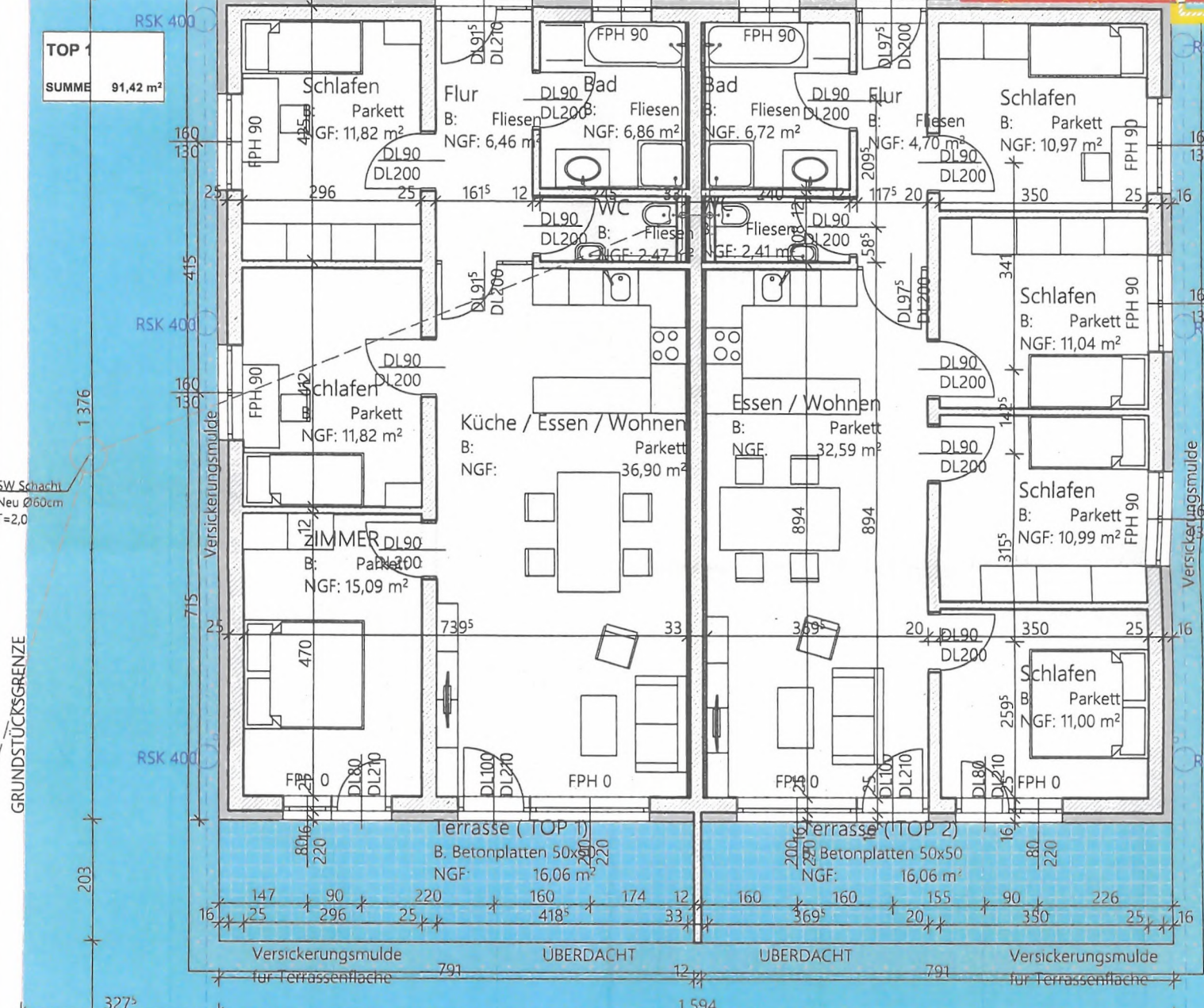
Pflasterung zu TOP 1, TOP 2, TOP 3  
NGF: 26,83 m<sup>2</sup>

Überdachte Eingang

Überdachte Eingang

TOP 1  
SUMME 91,42 m<sup>2</sup>

TOP 2  
SUMME 90,42 m<sup>2</sup>



SW Schacht  
Neu Ø60cm  
T=2,0

GRUNDSTÜCKSGRENZE

GRUNDSTÜCKSGRENZE

Garten (TOP 1)  
NGF: 115,60 m<sup>2</sup>

Garten (TOP 2)  
NGF: 135,99 m<sup>2</sup>

Sickerschacht  
Ø60cm  
T=3,0m  
V=2,4m<sup>3</sup>

Sickerschacht  
Ø60cm  
T=3,0m  
V=2,4m<sup>3</sup>

Sickerschacht  
Ø100cm  
T=3,0m  
V=2,4m<sup>3</sup>

Sickerschacht  
Ø100cm  
T=3,0m  
V=2,4m<sup>3</sup>

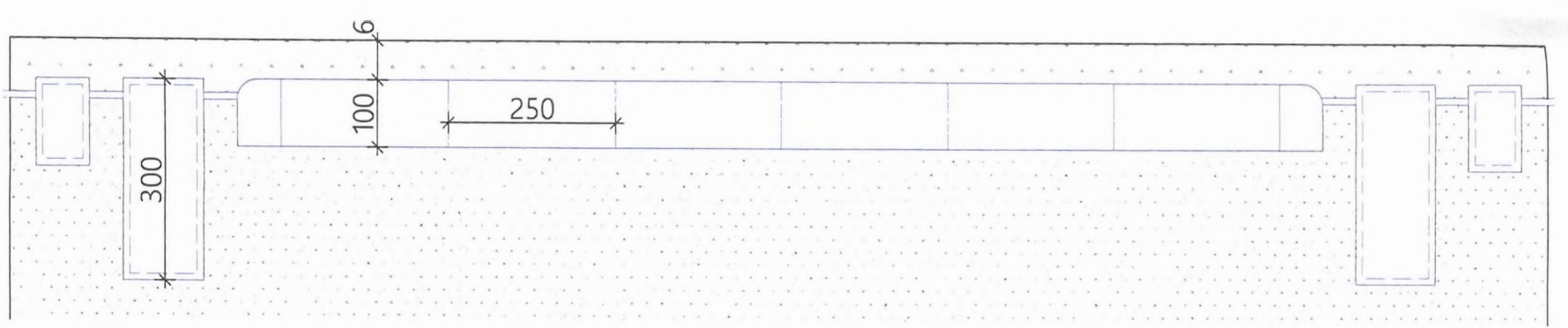
6 Stück Sickertunnel a 1600L + 2 Endkappen a 200L  
Gesamt: 10m<sup>3</sup>  
Q=324\*0,045=14,58m<sup>3</sup> Erforderlich  
Vorhanden Vol. 10m<sup>3</sup>\*4,8=48,8m<sup>3</sup>

Best. SW Schacht  
Ø75cm  
Deckel CK = 518m u.A.  
T=2,5m (515,5m u.A.)

GRUNDSTÜCKSGRENZE

GRUNDSTÜCKSGRENZE

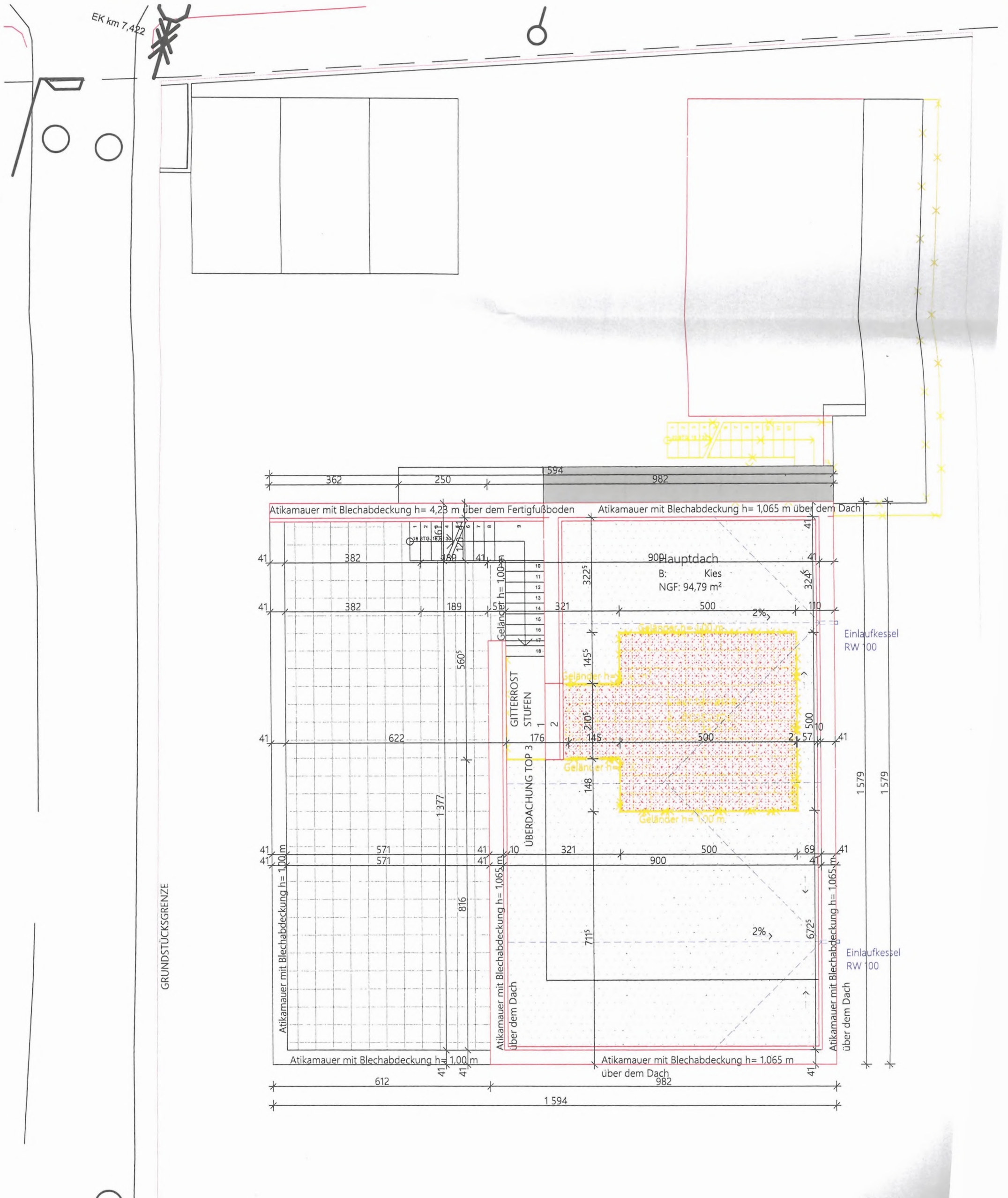




4

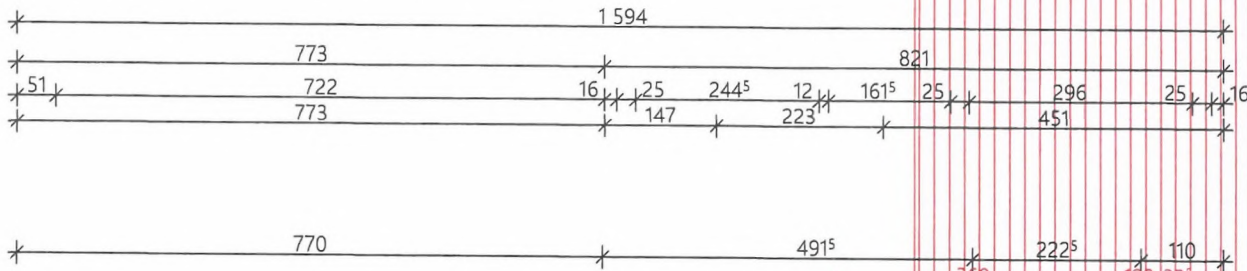
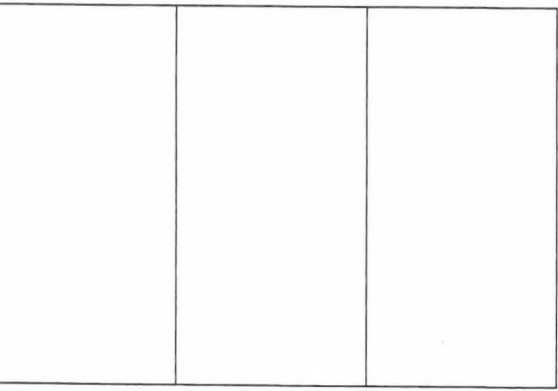
Schnitt Sickeranlage

1:

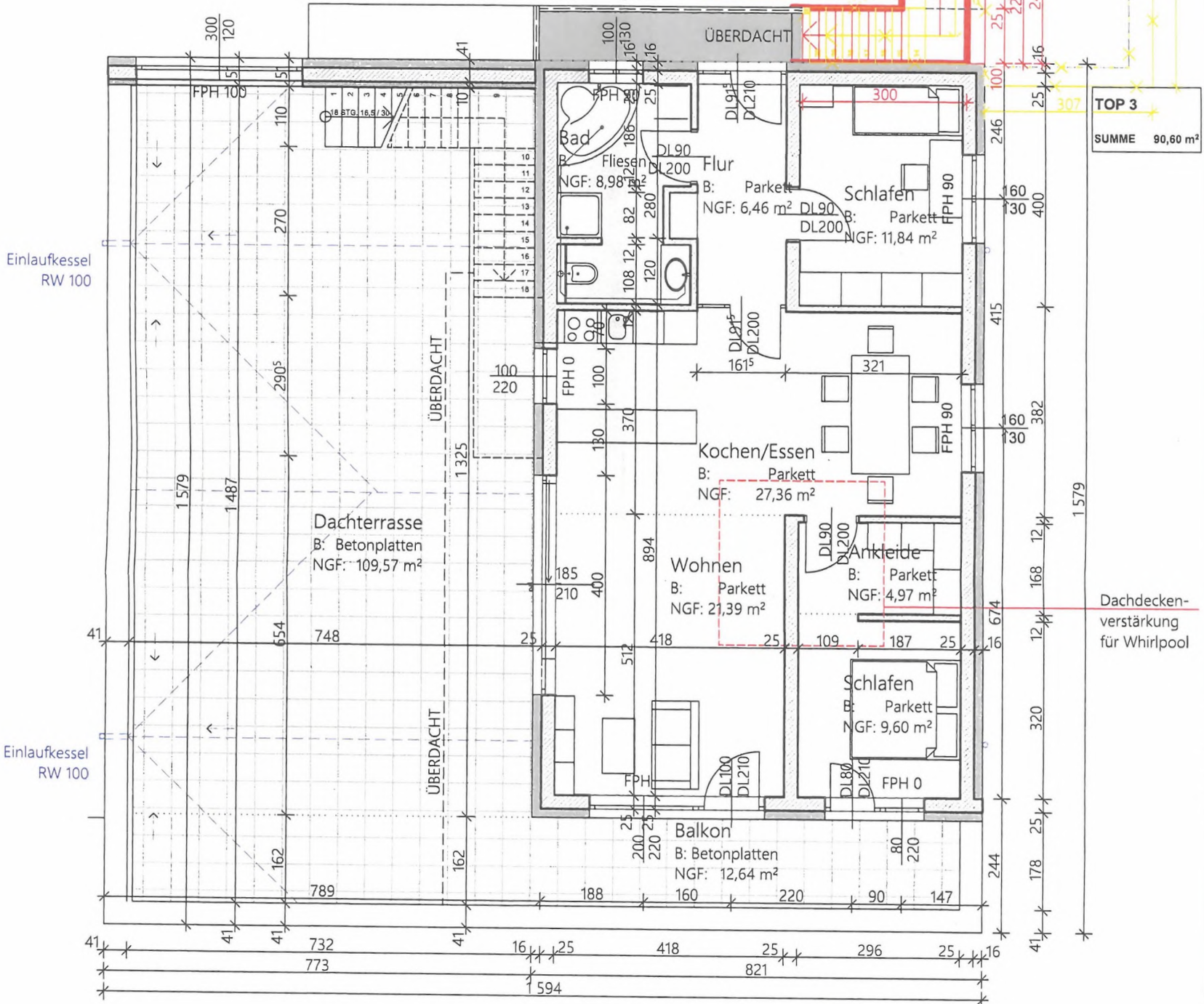


Landesbahn

EK km 7,422



Zugang TOP 3  
B: Beton  
NGF: 4,91 m<sup>2</sup>



TOP 3  
SUMME 90,60 m<sup>2</sup>

Einlaufkessel  
RW 100

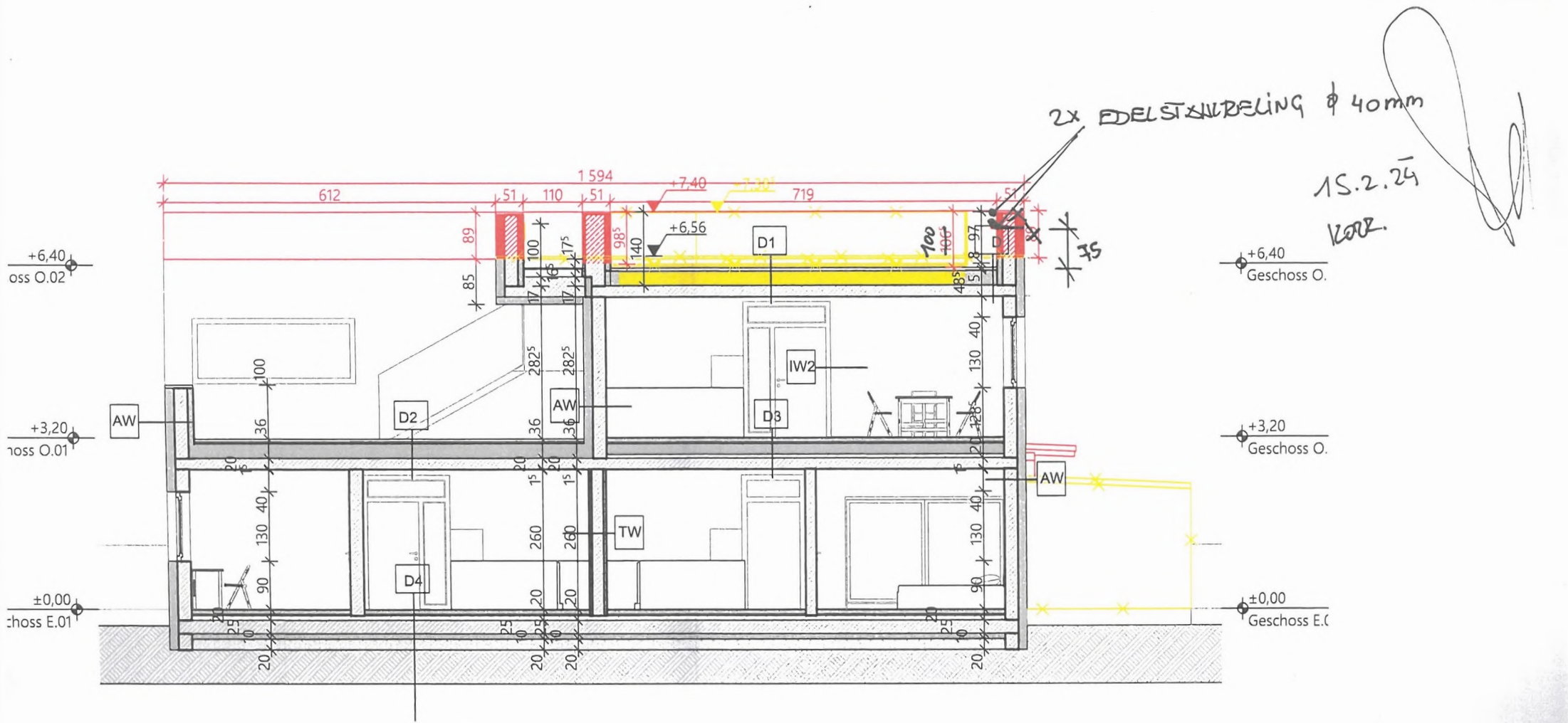
Einlaufkessel  
RW 100

GRUNDSTÜCKSGRENZE

+6  
Geschoss O.

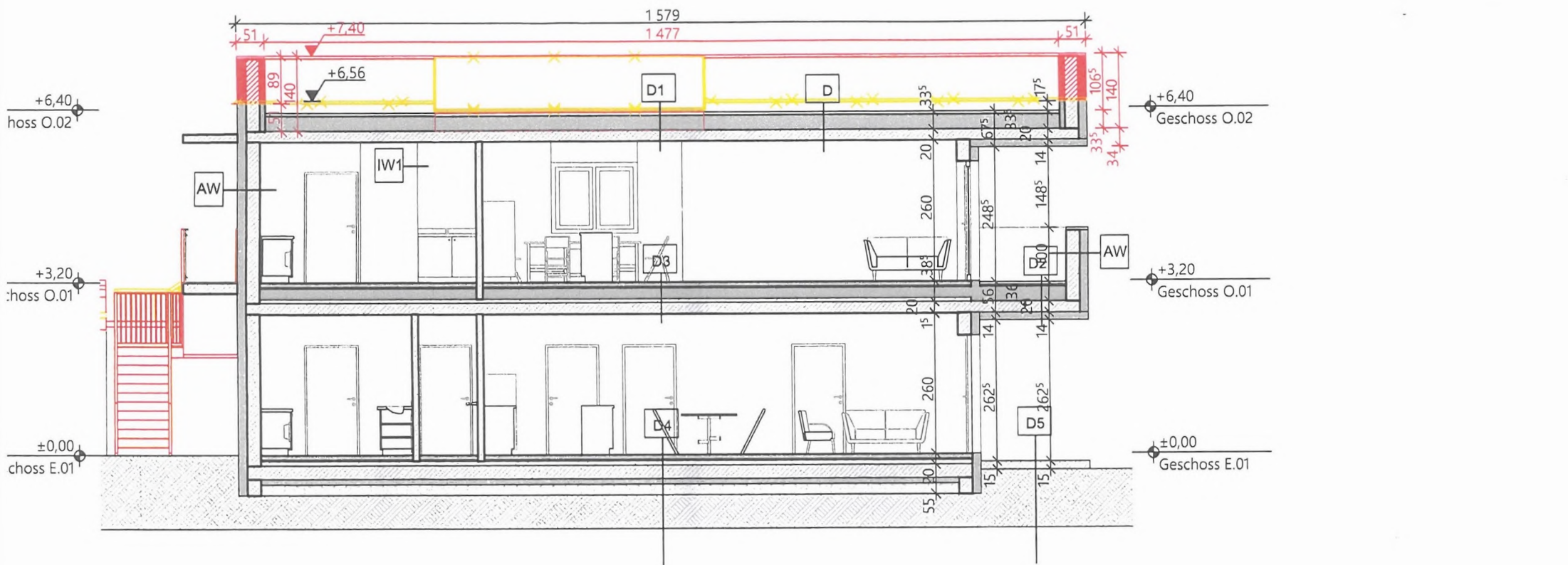
+3  
Geschoss O

+0,0  
Geschoss E.I



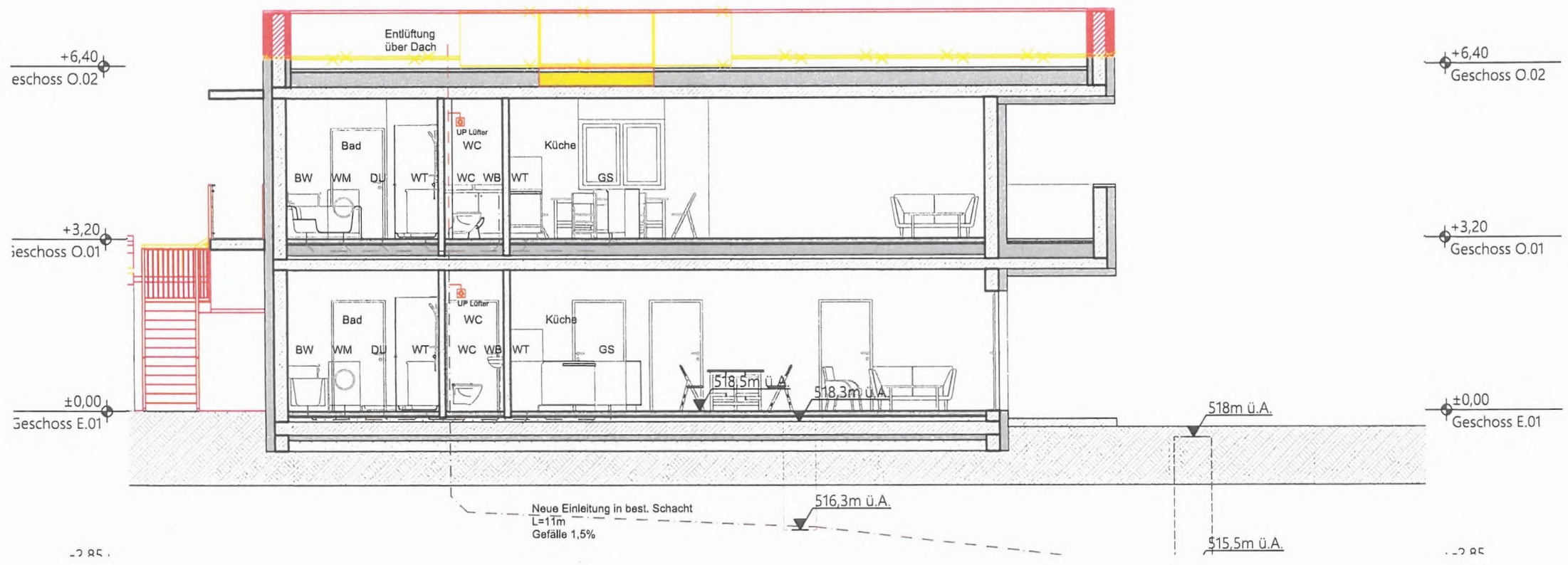
Schnitt 1-1

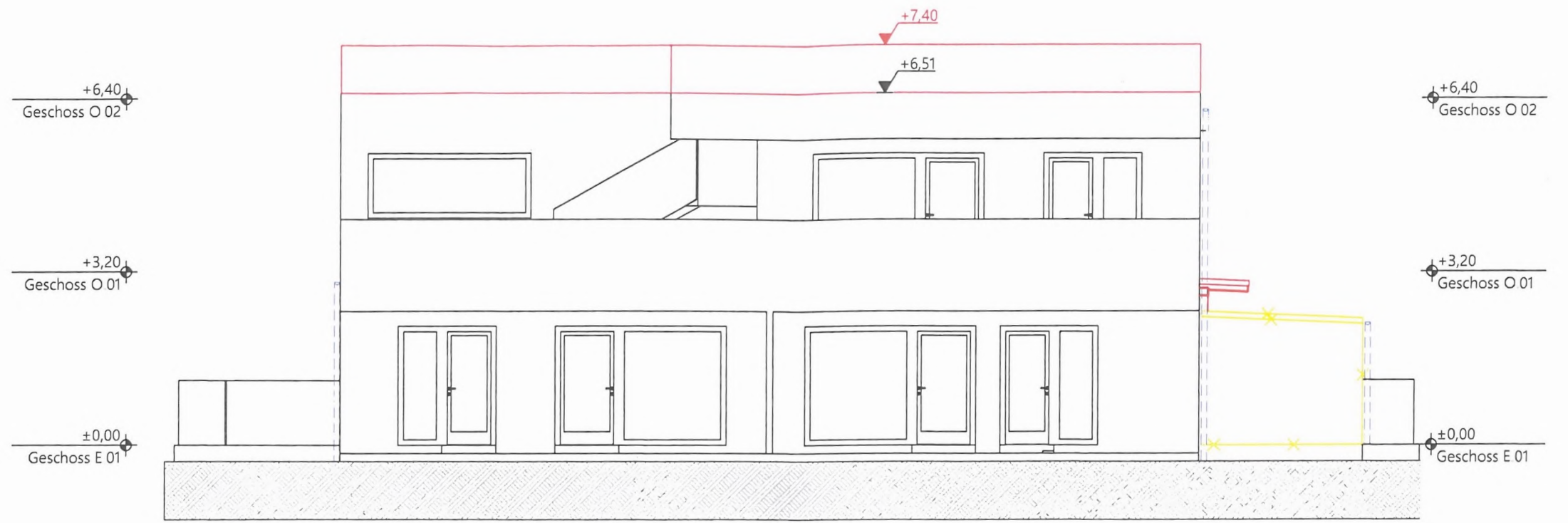
1:100



Schnitt 2-2

1:100

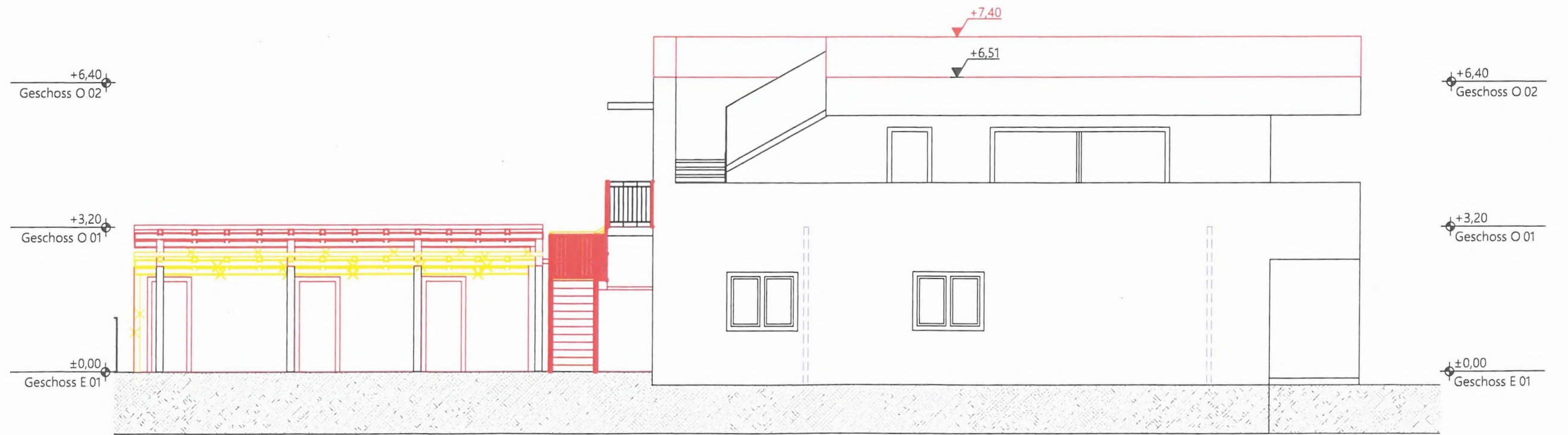




A-01

Ansicht Süd

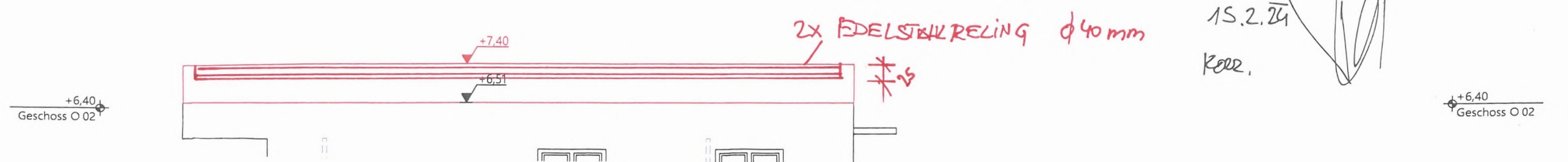
1:100



A-02

Ansicht West

1:100



2x EDELSTAHLREILING Ø 40 mm

15.2.24

Koll.

+6,40  
Geschoss O 02

1,1945

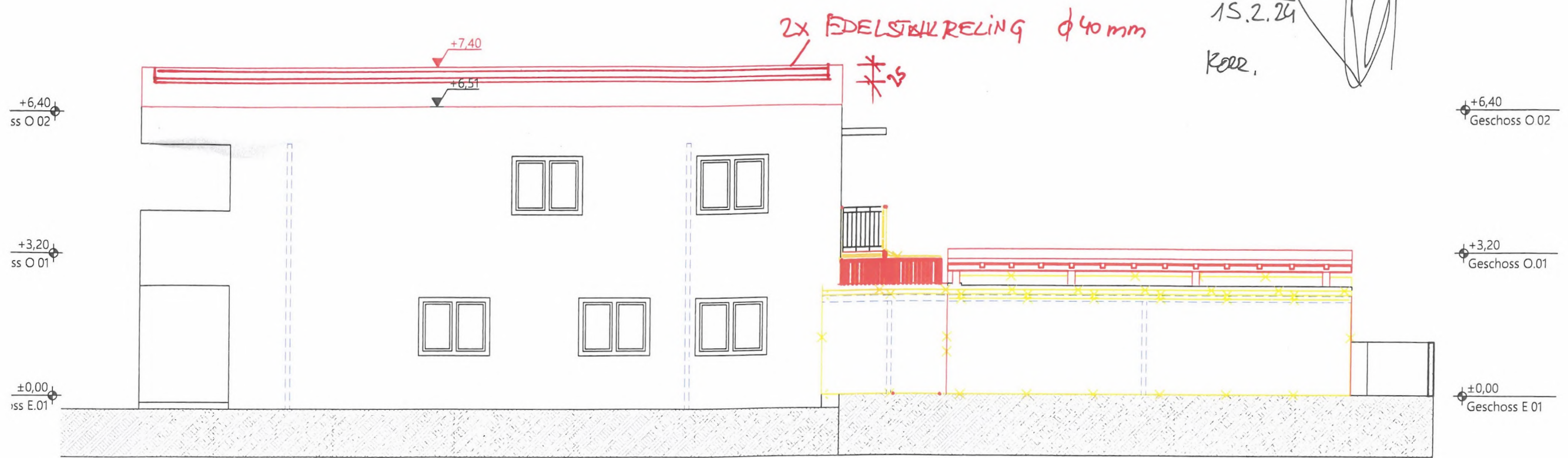
90,60 m<sup>2</sup>

cken-

A-02

Ansicht West

1:100



Ansicht Ost

1:100

